



*Up-to-date Questions and Answers from authentic resources to improve knowledge and pass the exam at very first attempt. ----- Guaranteed.*



AZ-801 Dumps  
AZ-801 Braindumps  
AZ-801 Real Questions  
AZ-801 Practice Test  
AZ-801 Actual Questions



[killexams.com](https://killexams.com)

**Microsoft**

# AZ-801

*Configuring Windows Server Hybrid Advanced Services*

ORDER FULL VERSION

<https://killexams.com/pass4sure/exam-detail/AZ-801>



### Question: 24

You have 100 Azure virtual machines that run Windows Server. The virtual machines are onboarded to Microsoft Defender for Cloud.

You need to shut down a virtual machine automatically if Microsoft Defender for Cloud generates the "Antimalware disabled in the virtual machine" alert for the virtual machine.

What should you use in Microsoft Defender for Cloud?

- A. a logic app
- B. a workbook
- C. a security policy
- D. adaptive network hardening

**Answer: A**

Explanation:

Reference: <https://docs.microsoft.com/en-us/azure/defender-for-cloud/managing-and-responding-alerts>

### Question: 25

You have a server that runs Windows Server. The server is configured to encrypt all incoming traffic by using a connection security rule.

You need to ensure that Server1 can respond to the unencrypted tracert commands initiated from computers on the same network.

What should you do from Windows Defender Firewall with Advanced Security?

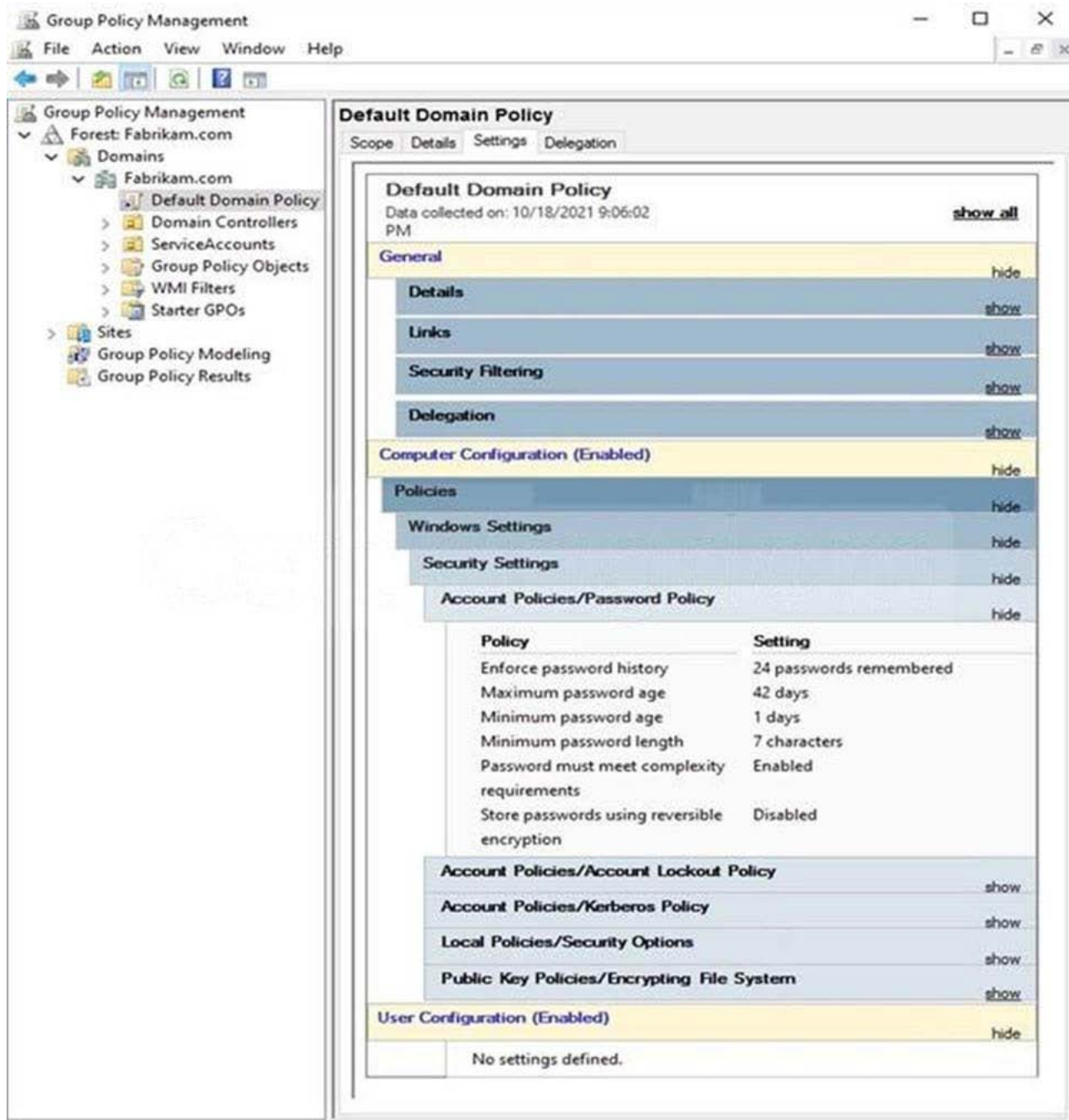
- A. From the IPsec Settings, configure IPsec defaults.
- B. Create a new custom outbound rule that allows ICMPv4 protocol connections for all profiles.
- C. Change the Firewall state of the Private profile to Off.
- D. From the IPsec Settings, configure IPsec exemptions.

**Answer: D**

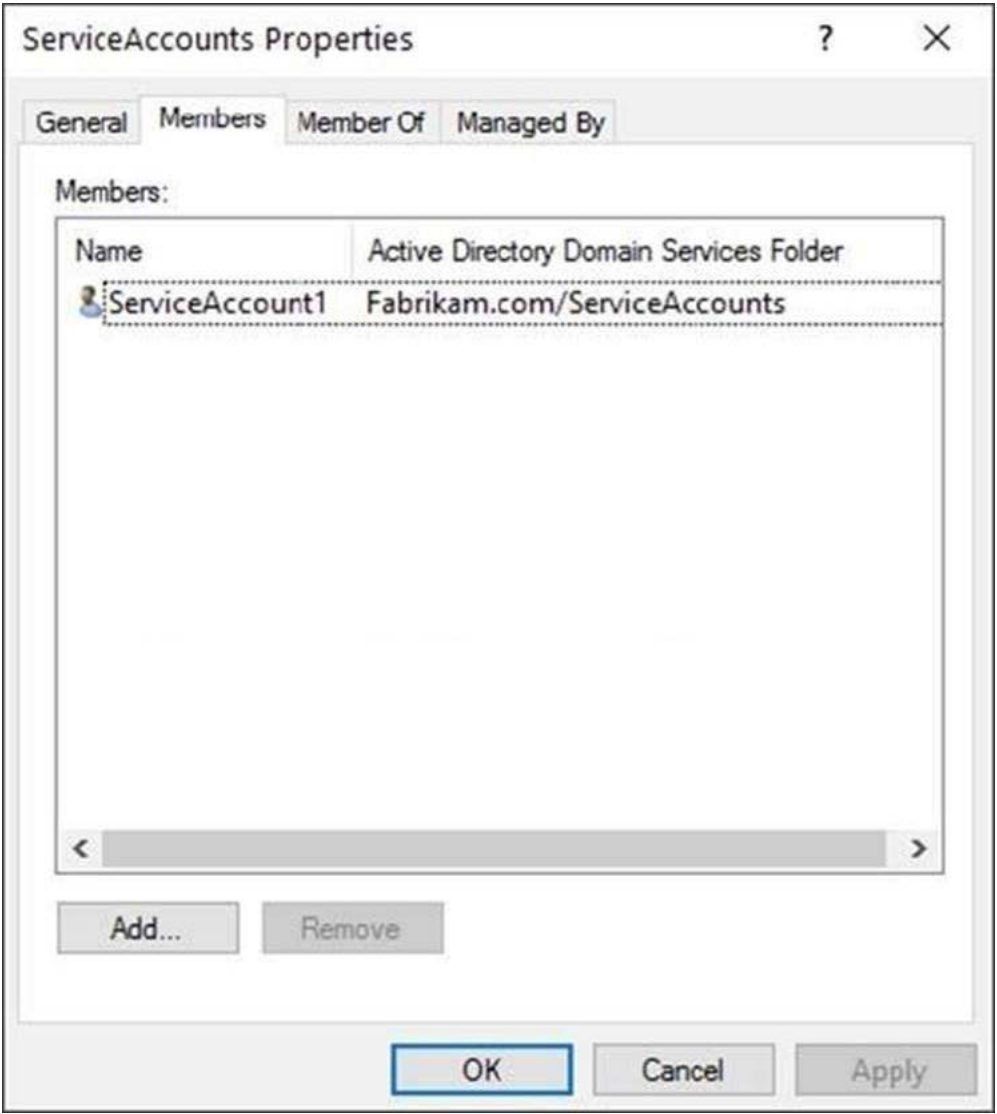
### Question: 26

HOTSPOT

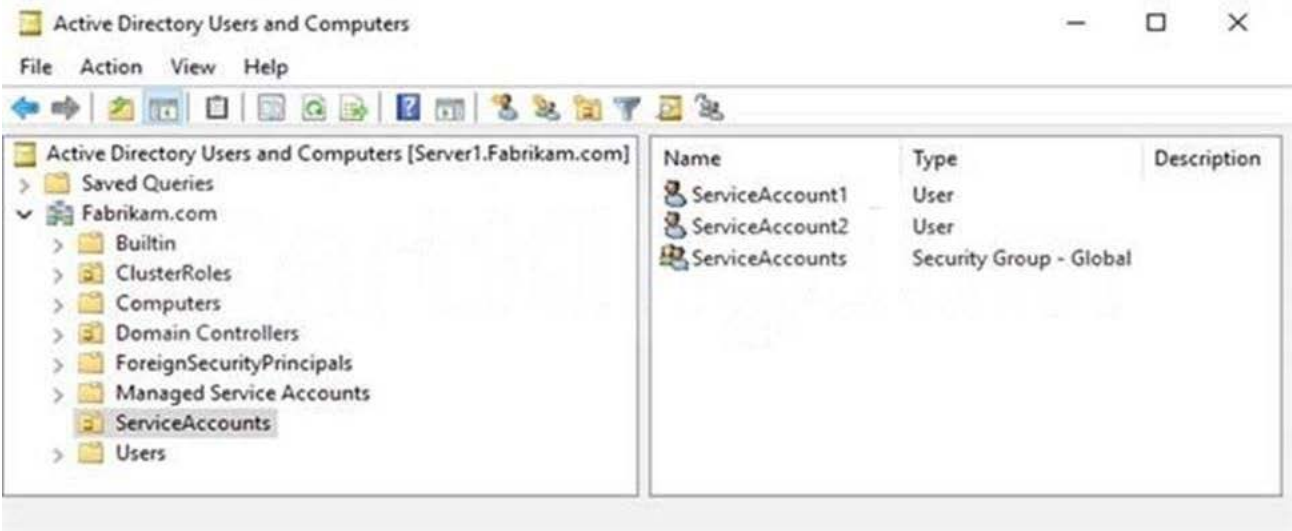
The Default Domain Policy Group Policy Object (GPO) is shown in the GPO exhibit. (Click the GPO tab.)



The members of a group named Service Accounts are shown in the Group exhibit. (Click the Group tab.)



An organizational unit (OU) named Service Accounts is shown in the OU exhibit. (Click the OU tab.)



You create a Password Settings Object (PSO) as shown in the PSO exhibit. (Click the PSO tab.)

**Service Accounts Policy** TASKS SECTIONS

**Password Settings**

Directly Applies To: ServiceAccounts

Extensions:

Name: Service Accounts Policy  
Precedence: 10

☒ Enforce minimum password length  
Minimum password length (character...: 16

☒ Enforce password history  
Number of passwords remembered: 12

☒ Password must meet complexity requirements

☐ Store password using reversible encryption

☒ Protect from accidental deletion

Description:

**Password age options:**

☒ Enforce minimum password age  
User cannot change the password...: 1

☒ Enforce maximum password age  
User must change the password af...: 30

☒ Enforce account lockout policy:  
Number of failed logon attempts allo...: 5  
Reset failed logon attempts count aft...: 30  
Account will be locked out:  
☒ For a duration of (mins): 60  
☐ Until an administrator manually unlocks the a...

**Directly Applies To**

| Name            | Mail |
|-----------------|------|
| ServiceAccounts |      |

**Extensions**

More Information OK Cancel

For each of the following statements, select Yes if the statement is true. Otherwise, select No. NOTE: Each correct selection is worth one point.

### Answer Area

| Statements   | Yes                   | No                    |
|--|-----------------------|-----------------------|
| The password of ServiceAccount1 must be at least 16 characters long.                             | <input type="radio"/> | <input type="radio"/> |
| The password of ServiceAccount2 must be at least 16 characters long.                             | <input type="radio"/> | <input type="radio"/> |
| Accounts that have the Service Accounts Policy applied can change their password to P@\$\$w0rd1. | <input type="radio"/> | <input type="radio"/> |

### Answer: Answer Area

| Statements   | Yes                              | No                               |
|--|----------------------------------|----------------------------------|
| The password of ServiceAccount1 must be at least 16 characters long.                             | <input checked="" type="radio"/> | <input type="radio"/>            |
| The password of ServiceAccount2 must be at least 16 characters long.                             | <input type="radio"/>            | <input checked="" type="radio"/> |
| Accounts that have the Service Accounts Policy applied can change their password to P@\$\$w0rd1. | <input checked="" type="radio"/> | <input type="radio"/>            |

Explanation:

Reference: <https://docs.microsoft.com/en-us/windows-server/identity/ad-ds/get-started/adac/introduction-to->

Question: 27

HOTSPOT

Your network contains an Active Directory Domain Services (AD DS) forest.

The forest contains the domains shown in the following table.

| Name            | Domain controller | Configuration                      |
|-----------------|-------------------|------------------------------------|
| fabrikam.com    | DC1               | PDC emulator                       |
|                 | DC2               | Infrastructure master              |
|                 | DC3               | Read-only domain controller (RODC) |
| eu.fabrikam.com | DC4               | PDC emulator                       |
|                 | DC5               | Infrastructure master              |
|                 | DC6               | Read-only domain controller (RODC) |

You are implementing Microsoft Defender for Identity sensors.

You need to install the sensors on the minimum number of domain controllers. The solution must ensure that Defender for Identity will detect all the security risks in both the domains.

What should you identify? To answer, select the appropriate options in the answer area. NOTE: Each correct selection is worth one point.

Answer Area

Domain controllers that require the sensors:

DC1 and DC4 only

DC2 and DC5 only

DC1, DC2, DC4, and DC5 only

All the domain controllers in the forest

Authentication information that must be provided during the sensor installation:

An AD DS group managed service account (gMSA)

A cloud-only user from Azure Active Directory (Azure AD)

The access key generated by the Microsoft Defender for Identity portal

Answer:

### Answer Area

Domain controllers that require the sensors:

|  |
|--|
| ▼  |
| DC1 and DC4 only                         |
| DC2 and DC5 only                         |
| DC1, DC2, DC4, and DC5 only              |
| All the domain controllers in the forest |

Authentication information that must be provided during the sensor installation:

|  |
|--|
| ▼  |
| An AD DS group managed service account (gMSA)                          |
| A cloud-only user from Azure Active Directory (Azure AD)               |
| The access key generated by the Microsoft Defender for Identity portal |

Explanation:

Reference:

<https://docs.microsoft.com/en-us/defender-for-identity/technical-faq#deployment>

<https://docs.microsoft.com/en-us/defender-for-identity/install-step4>

### Question: 28

You have an Azure virtual machine named VM1 that runs Windows Server. You plan to deploy a new line-of-business (LOB) application to VM1. You need to ensure that the application can create child processes.

What should you configure on VM1?

- A. Microsoft Defender Credential Guard
- B. Microsoft Defender Application Control
- C. Microsoft Defender SmartScreen
- D. Exploit protection

**Answer: D**

Explanation:

Reference: [https://docs.microsoft.com/en-us/microsoft-365/security/defender-endpoint/customize-exploit-protection?](https://docs.microsoft.com/en-us/microsoft-365/security/defender-endpoint/customize-exploit-protection?view=o365-worldwide)

[view=o365-worldwide](https://docs.microsoft.com/en-us/microsoft-365/security/defender-endpoint/customize-exploit-protection?view=o365-worldwide)

### Question: 29

You have an Azure virtual machine named VM1 that runs Windows Server.

You need to encrypt the contents of the disks on VM1 by using Azure Disk Encryption.

What is a prerequisite for implementing Azure Disk Encryption?

- A. Customer Lockbox for Microsoft Azure
- B. an Azure key vault
- C. a BitLocker recovery key
- D. data-link layer encryption in Azure

**Answer: B**

Explanation:

Reference: <https://docs.microsoft.com/en-us/azure/virtual-machines/windows/disk-encryption-overview>

### Question: 30

Note: This question is part of a series of questions that present the same scenario. Each question in the series contains a unique solution that might meet the stated goals. Some question sets might have

more than one correct solution, while others might not have a correct solution.

After you answer a question in this section, you will NOT be able to return to it. As a result, these questions will not appear in the review screen.

You have a server named Server1 that runs Windows Server.

You need to ensure that only specific applications can modify the data in protected folders on Server1. Solution: From Virus & threat protection, you configure Tamper Protection.

Does this meet the goal?

- A. Yes
- B. No

**Answer: B**

Explanation:

Reference: <https://docs.microsoft.com/en-us/microsoft-365/security/defender-endpoint/customize-controlled-folders?view=o365-worldwide>

### Question: 31

You are planning the migration of Archive1 to support the on-premises migration plan.

What is the minimum number of IP addresses required for the node and cluster roles on Cluster3?

- A. 2
- B. 3
- C. 4
- D. 5

**Answer: B**

Explanation:

One IP for each of the two nodes in the cluster and one IP for the cluster virtual IP (VIP). Implement and manage Windows Server high availability Question Set 2

# SAMPLE QUESTIONS



*These questions are for demo purpose only. **Full version** is up to date and contains actual questions and answers.*

*Killexams.com is an online platform that offers a wide range of services related to certification exam preparation. The platform provides actual questions, exam dumps, and practice tests to help individuals prepare for various certification exams with confidence. Here are some key features and services offered by Killexams.com:*



**Actual Exam Questions:** *Killexams.com provides actual exam questions that are experienced in test centers. These questions are updated regularly to ensure they are up-to-date and relevant to the latest exam syllabus. By studying these actual questions, candidates can familiarize themselves with the content and format of the real exam.*

**Exam Dumps:** *Killexams.com offers exam dumps in PDF format. These dumps contain a comprehensive collection of questions and answers that cover the exam topics. By using these dumps, candidates can enhance their knowledge and improve their chances of success in the certification exam.*

**Practice Tests:** *Killexams.com provides practice tests through their desktop VCE exam simulator and online test engine. These practice tests simulate the real exam environment and help candidates assess their readiness for the actual exam. The practice tests cover a wide range of questions and enable candidates to identify their strengths and weaknesses.*

**Guaranteed Success:** *Killexams.com offers a success guarantee with their exam dumps. They claim that by using their materials, candidates will pass their exams on the first attempt or they will refund the purchase price. This guarantee provides assurance and confidence to individuals preparing for certification exams.*

**Updated Content:** *Killexams.com regularly updates its question bank and exam dumps to ensure that they are current and reflect the latest changes in the exam syllabus. This helps candidates stay up-to-date with the exam content and increases their chances of success.*

**Technical Support:** *Killexams.com provides free 24x7 technical support to assist candidates with any queries or issues they may encounter while using their services. Their certified experts are available to provide guidance and help candidates throughout their exam preparation journey.*

For More exams visit <https://killexams.com/vendors-exam-list>  
*Kill your exam at First Attempt....Guaranteed!*